

The information provided in this market update is general market commentary provided solely for educational and informational purposes. The information was obtained from sources believed to be reliable, but we do not guarantee its accuracy. No statement within the update should be construed as a recommendation, solicitation or offer to buy or sell any futures or options on futures or to otherwise provide investment advice. Any use of the information provided in this update is at your own risk.

Heating Degree Day Forecast for the Week Ending Saturday, March 9, 2024

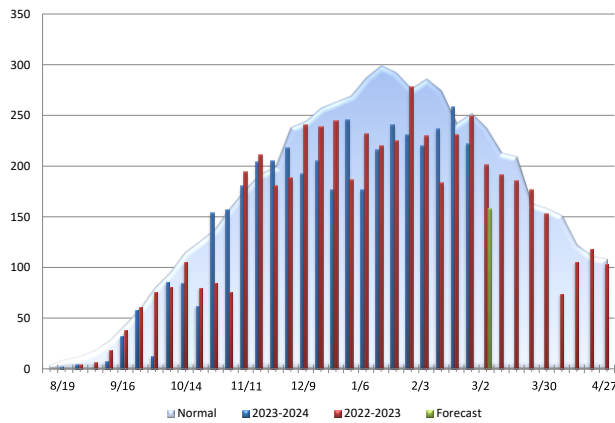
Abbrev.	State/Region	MTD HDDs	MTD HDDs	Forecast Total Weekly HDDs	Forecast Weekly Deviation vs. Normal	Forecast Weekly Deviation vs. Last Year	Cumulative HDDs	Cumulative Deviation vs. Normal	Cumulative Deviation vs. Last Year	Cumulative Deviation vs. Normal (%)	Cumulative Deviation vs. Last Year (%)
		As of 3/2/2024	vs. Last Year								
CT	CONNECTICUT	61	1	131	-83	-49	4,070	-453	224	-10	6
DE	DELAWARE	48	7	103	-70	-44	3,182	-459	86	-13	3
ME	MAINE	81	5	195	-72	-43	4,934	-910	-24	-16	0
MD	MARYLAND	49	11	103	-70	-47	3,259	-493	64	-13	2
MA	MASSACHUSETTS	65	4	155	-68	-50	4,102	-603	93	-13	2
NH	NEW HAMPSHIRE	73	2	168	-87	-57	4,617	-1009	-115	-18	-2
NJ	NEW JERSEY	54	3	126	-69	-45	3,581	-531	70	-13	2
NY	NEW YORK	61	0	137	-82	-59	4,100	-441	228	-10	6
PA	PENNSYLVANIA	58	11	116	-90	-72	3,934	-526	-3	-12	0
RI	RHODE ISLAND	60	3	157	-52	-33	3,953	-313	162	-7	4
VA	VIRGINIA	46	16	93	-66	-35	3,087	-400	71	-11	2
VT	VERMONT	76	5	178	-98	-77	5,240	-770	-83	-13	-2
NEW ENGLAND				155	-74	-50	4,255	-616	93	-13	2
MIDDLE ATLANTIC				128	-82	-60	3,939	-487	123	-11	3
NEW ENGLAND (OIL)				158	-75	-50	4,329	-645	82	-13	2
MIDDLE ATLANTIC (OIL)				129	-82	-61	3,977	-479	138	-11	4

Normals are 30-year averages from 1981-2010. Cumulative figures are from July 1 through 3/2/2024

New England Oil Home Heating, Customer Weighted

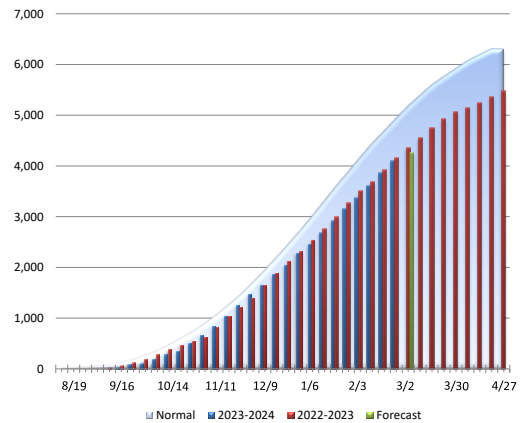
Total Weekly HDDs

Change	Comparison
-64	vs. Prior Week
-50	vs. Prior Year
-75	vs. Normal



Cumulative HDDs

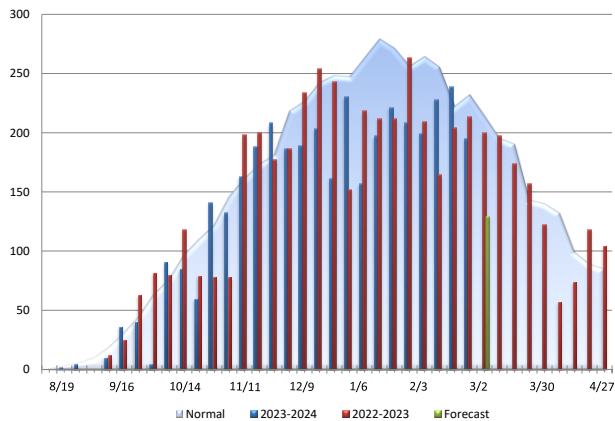
Change	Comparison
82	vs. Prior Year
-645	vs. Normal



Middle Atlantic Oil Home Heating, Customer Weighted

Total Weekly HDDs

Change	Comparison
-66	vs. Prior Week
-61	vs. Prior Year
-82	vs. Normal



Cumulative HDDs

Change	Comparison
138	vs. Prior Year
-479	vs. Normal

