

The information provided in this market update is general market commentary provided solely for educational and informational purposes. The information was obtained from sources believed to be reliable, but we do not guarantee its accuracy. No statement within the update should be construed as a recommendation, solicitation or offer to buy or sell any futures or options on futures or to otherwise provide investment advice. Any use of the information provided in this update is at your own risk.

Heating Degree Day Forecast for the Week Ending Saturday, February 7, 2026

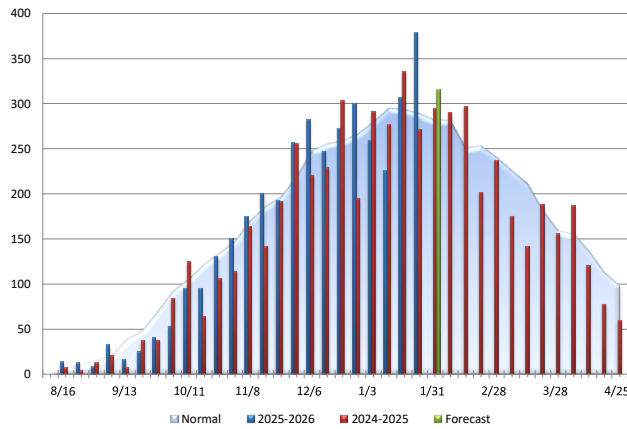
Abbrev.	State/Region	MTD HDDs	MTD HDDs	Forecast Total	Forecast Weekly	Forecast Weekly	Cumulative	Cumulative	Cumulative	Cumulative	Cumulative
		As of 1/31/2026	vs. Last Year	Weekly HDDs	Deviation vs. Normal	Deviation vs. Last Year	HDDs	Deviation vs. Normal	Deviation vs. Last Year	Deviation vs. Normal (%)	Deviation vs. Last Year (%)
CT	CONNECTICUT	1,240	53	302	38	48	3,511	81	294	2	9
DE	DELAWARE	1,084	-38	270	46	75	2,792	66	153	2	6
ME	MAINE	1,472	70	336	10	-20	4,393	-97	428	-2	11
MD	MARYLAND	1,090	-21	273	47	79	2,893	60	182	2	7
MA	MASSACHUSETTS	1,255	20	302	30	21	3,628	54	227	2	7
NH	NEW HAMPSHIRE	1,425	33	348	34	5	4,285	-41	351	-1	9
NJ	NEW JERSEY	1,175	15	290	46	62	3,212	108	282	3	10
NY	NEW YORK	1,270	36	311	43	51	3,352	-74	355	-2	12
PA	PENNSYLVANIA	1,280	-1	318	59	85	3,584	191	252	6	8
RI	RHODE ISLAND	1,221	48	297	46	40	3,564	350	303	11	9
VA	VIRGINIA	1,003	-67	255	49	102	2,680	32	137	1	5
VT	VERMONT	1,495	32	360	24	4	4,769	160	381	3	9
NEW	NEW ENGLAND			311	32	23	3,773	65	285	2	8
MIA	MIDDLE ATLANTIC			309	49	64	3,394	45	308	1	10
NEW	NEW ENGLAND (OIL)			315	30	20	3,843	52	302	1	9
MIA	MIDDLE ATLANTIC (OIL)			310	48	63	3,400	30	314	1	10

Normals are 30-year averages from 1981-2010. Cumulative figures are from July 1 through 1/31/2026

New England Oil Home Heating, Customer Weighted

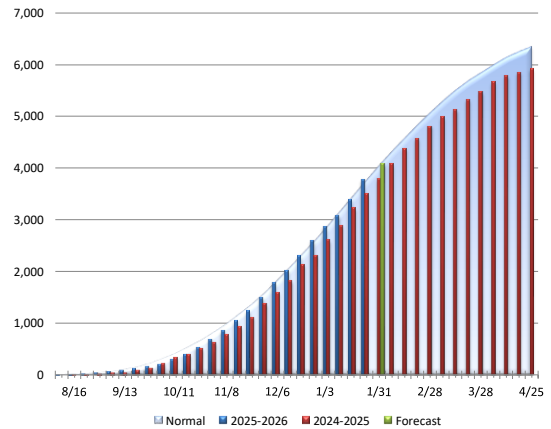
Total Weekly HDDs

Change	Comparison
-64	vs. Prior Week
20	vs. Prior Year
30	vs. Normal



Cumulative HDDs

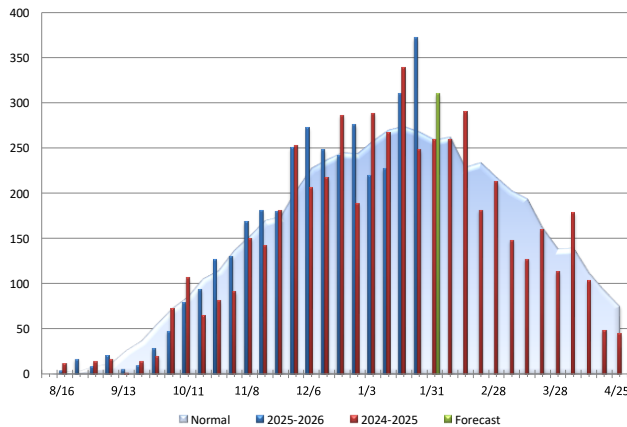
Change	Comparison
302	vs. Prior Year
52	vs. Normal



Middle Atlantic Oil Home Heating, Customer Weighted

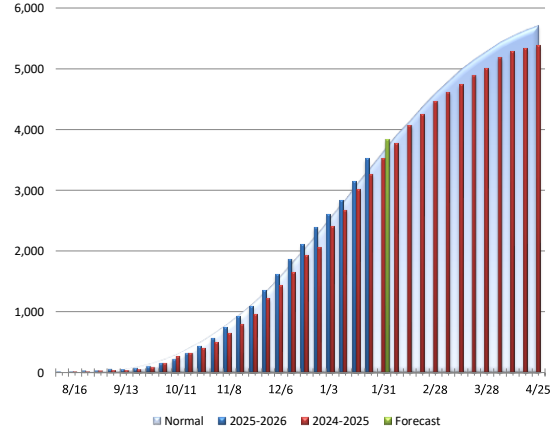
Total Weekly HDDs

Change	Comparison
-62	vs. Prior Week
63	vs. Prior Year
48	vs. Normal



Cumulative HDDs

Change	Comparison
314	vs. Prior Year
30	vs. Normal



Source: NOAA. Data are from sources considered reliable. Accuracy is not guaranteed.