

The information provided in this market update is general market commentary provided solely for educational and informational purposes. The information was obtained from sources believed to be reliable, but we do not guarantee its accuracy. No statement within the update should be construed as a recommendation, solicitation or offer to buy or sell any futures or options on futures or to otherwise provide investment advice. Any use of the information provided in this update is at your own risk.

Heating Degree Day Forecast for the Week Ending Saturday, April 11, 2026

Abbrev.	State/Region	MTD HDDs	MTD HDDs	Forecast Total	Forecast Weekly	Forecast Weekly	Cumulative	Cumulative	Cumulative	Cumulative	Cumulative
		As of 4/4/2026	vs. Last Year	Weekly HDDs	Deviation vs. Normal	Deviation vs. Last Year	HDDs	Deviation vs. Normal	Deviation vs. Last Year	Deviation vs. Normal (%)	Deviation vs. Last Year (%)
CT	CONNECTICUT	57	-11	116	-24	-40	5,438	78	468	1	9
DE	DELAWARE	26	-12	90	-13	-36	4,258	-40	246	-1	6
ME	MAINE	107	-7	184	0	-24	6,794	-114	422	-2	7
MD	MARYLAND	15	-25	87	-14	-36	4,319	-88	229	-2	6
MA	MASSACHUSETTS	70	-10	126	-26	-54	5,625	35	302	1	6
NH	NEW HAMPSHIRE	90	-12	164	-9	-38	6,596	-41	372	-1	6
NJ	NEW JERSEY	40	-17	114	-8	-38	4,926	62	409	1	9
NY	NEW YORK	60	-16	136	-6	-34	5,216	-183	455	-3	10
PA	PENNSYLVANIA	29	-36	118	-11	-45	5,315	58	299	1	6
RI	RHODE ISLAND	67	-7	138	-7	-23	5,540	439	475	9	9
VA	VIRGINIA	1	-30	75	-14	-19	3,901	-179	131	-4	3
VT	VERMONT	91	-16	172	-12	-38	7,220	123	452	2	7
NEW ENGLAND				135	-20	-43	5,836	59	379	1	7
MIA MIDDLE ATLANTIC				126	-8	-38	5,185	-58	397	-1	8
NEW ENGLAND (OIL)				140	-18	-41	5,941	46	390	1	7
MIA MIDDLE ATLANTIC (OIL)				128	-8	-38	5,203	-77	403	-1	8

Normals are 30-year averages from 1981-2010. Cumulative figures are from July 1 through 4/4/2026

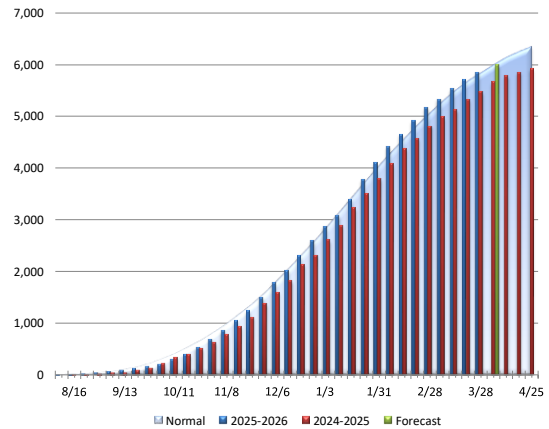
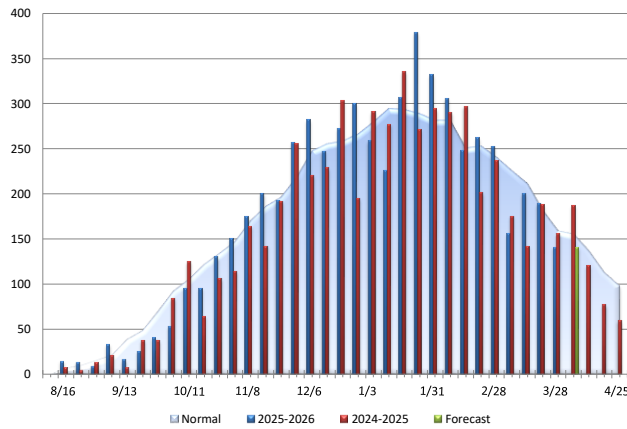
New England Oil Home Heating, Customer Weighted

Total Weekly HDDs

Cumulative HDDs

Change	Comparison
-1	vs. Prior Week
-41	vs. Prior Year
-18	vs. Normal

Change	Comparison
390	vs. Prior Year
46	vs. Normal



Middle Atlantic Oil Home Heating, Customer Weighted

Total Weekly HDDs

Cumulative HDDs

Change	Comparison
32	vs. Prior Week
-38	vs. Prior Year
-8	vs. Normal

Change	Comparison
403	vs. Prior Year
-77	vs. Normal

